

A. Lab Coat,
White (KP14WH)

B. Staff Coat,
White (KT33WH)

A. Lab Coat

- Performance-blend poplin
 - Left chest and two lower pockets
 - Lined notched lapel collar
 - Side vent openings
- 5 oz., 80/20 Polyester/
Combed Cotton

KP14 Men's Five-Button Front

Sizes: (Reg) 32-60 (Length 41.5"), (Long) 40-54, (Length 45.5"), vary by color
Colors: (GY), (LB), (NV), (WH)

KP18 Men's Five-Gripper Front, inside left chest pocket

Sizes: (Reg) S-4X (Length 41.5"), (Long) L-XL, (Length 45.5"), vary by color
Colors: (LB), (WH)

KP13 Women's Six-Button Front,

princess seams in back
Sizes: XS-4X (Length 38.25"), vary by color
Colors: (LB), (NV), (WH)

KP15 Women's Six-Gripper Front, inside left chest pocket

Sizes: S-2XL

Color Selection: GY, LB, NV, WH

B. Staff Coat

- Left chest and two lower pockets
 - Pleated back with sewn-on belt
 - Side vent openings
- 6 oz., 80/20 Polyester/
Combed Cotton Fine Line Twill

KT34 Men's

Sizes: S-XL (Length 39")

KT33 Women's

Sizes: XS-2XL (Length 38.25")

Color Selection: GY, LB, NV, WH

Service

Service industries have a solid foundation with Red Kap®'s offering of manufacturing, retail and all-new hotel-ready uniforms for all the job functions you can think of.

Gray
(GY)

Light Blue
(LB)

Navy
(NV)

White
(WH)

A. Specialized Lapel/Counter Coat, White (KP16WH)



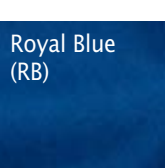
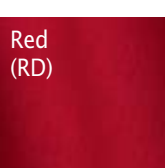
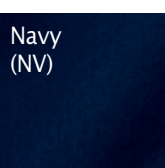
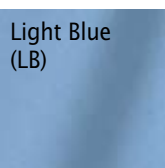
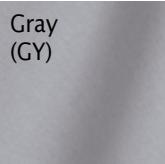
B. Lapel/Counter Coat, White (KP11WH)



C. Notch Collar Lapel/Counter Coat, White (4010WH)



D. Lab Coat, White (5210WH)



A. Specialized Lapel/Counter Coat

- Performance-blend poplin
 - Two lower pockets
 - Square hemmed front
- 5 oz., 80/20 Polyester/Combed Cotton*

KP16 Men's Three-Gripper Front
 Sizes: S-3XL (Length 30")

KP17 Women's Four-Gripper Front with back princess seams
 Sizes: S-2XL (Length 28")

Color: (WH)

IL LS HW

B. Lapel/Counter Coat

- Performance-blend poplin
- Blazer styling with rounded front
- Three-button closure and two lower pockets
- Left chest pocket with pencil stall
- KP11 has princess seams in back

5 oz., 80/20 Polyester/Combed Cotton

KP10 Men's Three-Button
 Sizes: (Reg) XS-3XL (Length 30"), (Long) M-2XL
 Colors: (GY), (LB), (NV), (RB), (RD), (WH)

5090 Three-Button Front
 Sizes: XS-3XL (Length 30.75")
 Color: (WH)

KP11 Women's Four-Button
 Sizes: S-2XL (Length 28")
 Color: (WH)

IL LS HW

C. Notch Collar Lapel/Counter Coat

- Left chest pocket and two lower pockets
- 7 oz., 65/35 Polyester/Cotton Twill*

4010 Three-Button Front
 Sizes: XS-3XL (Length 30.75")

IL LS HW

D. Lab Coat

- Performance-blend cotton
 - 5080/5700 w/side vents and two lower pockets
- 5 oz., 80/20 Polyester/Cotton Poplin*
- 5080** Men's Four-Gripper Front with interior chest pocket
 Sizes: S-3XL (Length 41.5")
 Colors: (LB), (WH)

5700 Men's Four-Button Front with exterior chest pocket/pencil stall
 Sizes: XS-3XL (Length 41.5"), vary by color
 Colors: (NV), (WH)

5210 Women's Five-Button Front

- Exterior chest pocket/pencil stall
- Decorative belted back, no side vents, front shoulder darts

Sizes: S-4XL (Length 37")
 Color: (WH)

IL LS HW

E. Specialized Cuffed Lab Coat, White (KP70WH)



F. Specialized Lab Coat, White (KP38WH)



E. Specialized Cuffed Lab Coat

- Performance blend poplin
- Polyester knit wristlet cuffs
- Chest pocket and lower pockets
- Six-gripper closures and neck gripper
- No side vent openings

5 oz., 80/20 Polyester/Combed Cotton

KP70 Exterior Chest Pocket

Sizes: XS-3XL (Length 41.5")

KP72 Interior Chest Pocket

Sizes: S-4XL (Length 41.5")

Color: (WH)

IL LS HW

F. Specialized Lab Coat

- Performance blend poplin
- Pocketless, with side vent openings

5 oz., 80/20 Polyester/Combed Cotton

KP38 Five-Gripper Front

Sizes: S-4XL (Length 41.5")

Color: (WH)

IL LS HW

A. Butcher Wrap

- Left chest pocket and two lower pockets
- Reversible self-tie closure
- Side vent openings

5 oz., 80/20 Polyester/Combed

Cotton Performance Blended Poplin

WP10 Collarless ¾ Sleeve with pockets

Sizes: S-4XL (Length 37"), vary by color

Colors: (GY), (LB), (NV), (RB), (RD), (WH)

WP18 Collarless ¾ Sleeve, no pockets

Sizes: S-4XL (Length 37"), vary by color

Colors: (LB), (NV), (WH)

7 oz., 65/35 Polyester/Combed

Cotton Twill

WT50 Tie Closure with Collar

Sizes: M-3XL (Length 44.5")

Color: (WH)

7.2 oz. 100% Spun Polyester

WS50 Tie closure with collar

Sizes: M-3XL (Length 44.5")

Color: (WH)

6 oz. 100% Spun Polyester

WS40 Tie closure with collar

Sizes: M-3XL (Length 44.5")

Color: (WH)

IL **LS** **HW**

B. Full-Cut Butcher Coat

- Interior chest pocket
- Two oversized exterior pockets
- Side and back vent openings
- Large dome snap closure
- Full cut to wear over heavy clothes
- Soft hand with VISA soil release

7.5 oz. Twill, 65/35 Polyester/Cotton

KT50 Full Cut, Sizes: S-3XL

(Length 45.5")

Color: (WH)

IL **LS** **HW**

C. Gripper Front Butcher Coat

- Traditional fit with gripper closure
- Side vent openings; no back vent
- Soft hand with VISA soil release

7.2 oz. 100% Spun Polyester

KS62 Gripper Front

- Left chest pocket
- Two lower pockets

Sizes: M-3XL

Color: (WH)

KS64 Gripper Front

- Interior chest pocket
- Two exterior pockets

Sizes: M-4XL (Length 44.25")

Color: (WH)

7.5 oz. Twill 65/35 Polyester/Cotton

KT18 Gripper Front

- Interior chest pocket
- Two exterior pockets

Sizes: S-3XL (Length 41.5")

Color: (WH)

IL **LS** **HW**

A. Butcher Wrap,
Collarless, White
(WP10WH)

B. Full-Cut
Butcher
Coat, White
(KT50WH)

C. Gripper
Front Butcher
Coat, White
(KT18WH)

Gray
(GY)

Light Blue
(LB)

Navy
(NV)

Red
(RD)

Royal Blue
(RB)

White
(WH)

D. Gripper Front Butcher Coat

7 oz., 65/35 Polyester/Cotton Twill

Sizes: S-4XL (Length 44.75")

4016 Six-Gripper front with exterior left chest and two lower exterior pockets

4004 Six-Gripper front with exterior left chest and two lower exterior pockets

4006 Gripper front, no pockets

Color: (WH)

IL LS HW

E. Gripper Front Short Butcher Coat

7 oz., 65/35 Polyester/Cotton Twill

0406 Five-Gripper front, chest pocket and two lower pockets

Sizes: S-4XL (Length 30.75")

0416 Four-Gripper front, no pockets

Sizes: M-4XL (Length 30.75")

Color: (WH)

IL LS HW

Snap Front Butcher Coat

(not shown)

- Interior chest pocket
- Two oversized exterior pockets
- Side vent openings
- Large dome snap closure
- Soft hand with VISA soil release

7.2 oz., 100% Spun Polyester

KS58 Traditional Fit

Sizes: S-3XL (Length 45")

Color: (WH)

IL LS HW

Snap Front Short Butcher Coat

(not shown)

- Interior chest pocket
- Large dome snap closure
- Soft hand with VISA soil release

7.5 oz., Twill, 65/35 Polyester/Cotton

KS16 Hip Length

Sizes: S-3XL (Length 28.75")

Color: (WH)

IL LS HW

D. Gripper Front Butcher Coat, White (4016WH)

E. Gripper Front Short Butcher Coat, White (0406WH)

A. Women's Smock

- Performance blend poplin
- Matches PP73 pant
- TP23/27 with two lower french-hemmed pockets
- TP11 with adjustable 3/4 sleeves, princess seams and two lower patch pockets

5 oz., 80/20 Polyester/Combed Cotton
TP31 Women's loose fit, button front, loose 3/4 sleeve, two lower patch pockets

Sizes: S-4XL, vary by color
 Colors: (LB), (NV), (RB), (RD), (WH)

TP23 Women's loose fit, button front, French hemmed, short sleeve
 Sizes: S-4XL

Colors: (LB), (NV), (RD), (TN), (WH)

TP27 Women's loose fit, gripper front, french hemmed, short sleeve
 Sizes: S-4XL

Colors: (LB), (WH)

TP11 Women's fitted smock, button front, adjustable 3/4 sleeve

Sizes: S-3XL

Colors: (LB), (NV), (WH)

IL LS HW

B. Women's Poplin Pant

Style that won't slow you down with a 1" full elastic waistband.

- Performance blend poplin
- 1" full elastic waistband
- Two set-in side pockets
- Stitched down front crease
- Matches smocks TP11/23/37

5 oz., 80/20 Polyester/Combed Cotton
 (White: 6.5 oz., 65/35 Polyester/Cotton)

PP73 Women's sizes: 6-28, vary by color
 Colors: (LB), (NV), (WH)

IL LS HW

C. Uniform Blouse

A soft look and feel in Touchtex® poplin.

- Squared bottom hem
- Left chest pocket

4.25 oz., 65/35 Polyester/Cotton

SP65 Sizes: S-3XL, Color: (MB)

Sizes: S-4XL, Color: (WH)

IL LS HW

A. Women's Smock Fitted, Light Blue (TP11LB)



B. Women's Poplin Pant, Light Blue (PP73LB)

C. Uniform Blouse, White (SP65WH)



A. Women's Smock Loose Fit, White (TP23WH)



D. Zip Front Smock, White (KP43WH), Navy (KP44NV)



D. Zip Front Smock

Versatile smock in soft Touchtex® fabric.

- Concealed zipper closure
- Women's has shapely princess seams for a flattering fit with two lower pockets
- Men's has three patch pockets including one pencil-tacked hex pocket
- Cool release, wickable fabric
- Notched lapel collar

4.25 oz., 65/35 Polyester/Cotton Touchtex® Fabric

KP43 Women's sizes: XS-5XL (31" Length)

KP44 Men's sizes: S-5XL (30" Length)

Colors: (NV), (WH)

IL LS HW



E. NEW Convertible Collar Shirt, Zip Front

An easy-wearing, lightweight shirt jac comfortable enough to wear over a T-shirt.

- Concealed zipper front closure for a modern look and easy customization
- Concealed gripper at top for secure reinforcement
- Two roomy patch pockets, reinforced at stress points

4.5 oz., 65/35 Polyester/Cotton Poplin

1P60 Men's sizes: S-4XL

Colors: (BK), (NV)

LS HW

F. Short Sleeve Dress

A feminine look for the housekeeping staff with shapely princess seams.

- Performance blend poplin
- Two lower pockets

5 oz., 80/20 Polyester/Cotton Poplin

DP23 Button Front

Sizes: S-2XL, Color: (LB)

Sizes: S-3XL, Color: (WH)

5.2 oz., 80/20 Polyester/Cotton Poplin

DP29 Gripper Front

Sizes: S-4XL, Color: (WH)

IL LS HW

G. NEW Easy Wear Tunic

A comfortable, easy-to-wear style in woven poplin.

- Cut for easy movement
- Full princess seams for shaping
- Left slanted front pocket
- Right slanted double pocket

4.5 oz., 65/35 Polyester/Cotton Poplin

9P01 Women's sizes: XS-3XL

Colors: (BU), (EM), (NV), (SD)

LS HW

H. NEW Pull-On Elastic Waist Pant

Style that won't slow you down with a wide full elastic waistband.

- Two set-in pockets
- 1.5" full elastic waistband
- 32.5" inseam is easily altered

4.5 oz., 65/35 Polyester/Cotton Poplin

2P11 Women's sizes: XS-3XL

Colors: (BK), (BU), (EM), (NV), (SD)

LS HW

Shirt Jac (not shown)

Move through your day easily thanks to comfort styling.

- Concealed button closure
- Concealed gripper at bottom
- Two-piece collar lined with stays

Men's sizes: (Reg) S-4XL, (Long) L-2XL

5 oz., 65/35 Polyester/Cotton Poplin

SP45 Long Sleeve

SP35 Short Sleeve

6 oz., 100% Cotton

SC35 Long Sleeve

Color: (WH)

IL LS HW

E. Convertible Collar Shirt Zip Front, Black (1P60BK)



F. Short Sleeve Dress, White (DP23WH)



G. Easy Wear Tunic, Sundance (9P01SD)

H. Pull-On Elastic Waist Pant, Sundance (2P11SD)

Black
(BK)

Burgundy
(BU)

Emerald
(EM)

Navy
(NV)

Sundance
(SD)

A. Double Breasted Lapel Tunic, Burgundy (9S03BU)

B. Double Breasted Dress, Burgundy (9S01BU)



B. NEW Double Breasted Dress

A crisp professional look that's comfortable, with dual action stain repel/soil release white trim.

- Relaxed shoulders for casual comfort and perfectly balanced fit
- Additional fabric built into underarm seam for greater range of motion
- Modest top button placement
- Adjustable back ties for a custom fit
- Easy side entry pockets
- Smooth, flattened sleeve seams for "no rub" comfort

4.5 oz., 75/25 Polyester/Cotton Pincord

9S01 Women's sizes: XS-3XL

Colors: (BK), (BU), (HU), (NV), (TN),

LS HW

C. NEW Single Breasted Tunic

Basic pincord tunic is flavored with contrasting white trim, treated with dual action stain repel/soil release.

- Modest button front closure
- Contrasting sleeve opening tabs
- Two roomy front patch pockets bar-tacked for strength through wash and wear

4.5 oz., 75/25 Polyester/Cotton Pincord

9S05 Women's sizes: XS-3XL

Colors: (BK), (HU), (NV)

LS HW

D. NEW Easy Pull-On Slacks

Easy style teams up with a wide 1.5" full elastic waistband for a comfortable, relaxed fit.

- Roomy sideseam pockets reinforced for long wear
- 32.5" finished inseam, can be easily altered

4.5 oz., 75/25 Polyester/Cotton Pincord

2S11 Women's sizes: XS-3XL

Colors: (BK), (HU), (NV), (TN)

LS HW

E. NEW Pincord Shirt Jacket

A hard working, durable basic that looks good all day.

- Deep back inverted pleat for ease of movement, reinforced for stay-put wearability
- Half-belted back gives added style
- Zipper fly front, snap at neck
- Deep front patch pockets

4.5 oz., 75/25 Polyester/Cotton Pincord

1S00 Men's sizes: S-4XL

Colors: (BK), (BU), (HU), (NV), (TN)

LS HW



A. NEW Double Breasted Lapel Tunic

White trim in a dual action repel/release fabric adds a touch of contrast to this pincord topper.

- Two roomy front patch pockets bar-tacked at stress points
- Modest top button placement
- Additional fabric built in to underarm seam for greater range of motion
- Smooth, flattened sleeve seams for "no rub" comfort
- Back fixed belt and kick pleat

4.5 oz., 75/25 Polyester/Cotton Pincord

9S03 Women's sizes: XS-3XL

Colors: (BK), (BU), (HU), (NV), (TN)

LS HW

C. Single Breasted Tunic, Black (9S05BK)

E. Pincord Shirt Jacket, Black (1S00BK)

D. Easy Pull-On Slacks, Black (2S11BK)

F. NEW Elastic Waist Split Skirt

Pull-on ease joins split skirt comfort for a skirt that moves with you.

- Comfortably wide elastic waist
- Roomy side pockets reinforced for long wear
- Great fit and ideal length

4.5 oz., 75/25

Polyester/Cotton Pincord

9S07 Women's sizes: XS-3X
Colors: (BK), (HU), (NV), (TN)

LS HW

F. Elastic Waist Split Skirt, Navy (9S07NV)



imagine it!sm

Need those special touches to elevate your image? Get a professional finish to your hospitality garments with epaulets or custom pocket flaps.



G. Straight Line Apron, White (7P03WH)

H. V-Line Apron, White (7P01WH)

G. NEW Straight Line Apron

Tie on a crisp looking basic. Soil release, moisture wicking fabric.

- Straight bottom
 - Easy tie back
 - Easily customizable for numerous looks
- 4.25 oz., 65/35 *Polyester/Cotton Poplin*
7P03 Women's sizes: A fits sizes XS-S,
B fits sizes M-XL, C fits sizes 2X-4X
Color: White (WH)

LS HW

H. NEW V-Line Apron

V-shaped bottom gives a new look to a housekeeping basic. Soil release, moisture wicking fabric.

- Easy Care
 - Wrap style with ties
 - Easily customizable for numerous looks
- 4.25 oz., 65/35 *Polyester/Cotton Poplin*
7P01 Women's sizes: A fits sizes XS-S,
B fits sizes M-XL, C fits sizes 2X-4X
Color: White (WH)

LS HW

A. Microfiber Shawl Collar Dress, Putty/Black (9K01PT)



B. Microfiber Camp Shirt, Burgundy/Black (1K00BU)



C. Microfiber Shawl Collar Tunic, Putty/Black (9K03PT)



D. Microfiber Pull On Pant, Black (2M11BK)

A. NEW Microfiber Shawl Collar Dress

The soft, comfortable way to work in easy care microfiber with moisture management. All bodies feature black collar, cuffs and front button.

- Shaped, princess seams for an easy elegant fit
- Collar and cuffs have dual-action stain repel/soil release
- Roomy sideseam pockets reinforced at stress points for outstanding durability
- Adjustable belt
- Center back inverted pleat for easy movement

4.5 oz., 100% Polyester Microfiber Microcheck

9K01 Women's sizes: XS-3XL
Colors: (BU), (PT), (ST)

LS HW

B. NEW Microfiber Camp Shirt

Keep cool and stay dry in polyester microfiber. Moisture management for exceptional all day comfort.

- Button front with open collar
- Side vents for easy movement
- Left chest pocket is reinforced for durability

4.5 oz., 100% Polyester Microfiber Microcheck

1K00 Men's sizes: XS-3XL
Colors: (BU), (PT), (ST)

LS HW

C. NEW Microfiber Shawl Collar Tunic

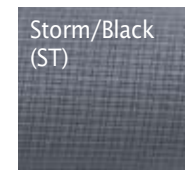
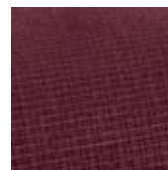
The perfect topper for slacks or a skirt in comfortable carefree microfiber.

- Princess seams provide a flattering silhouette while allowing ease of movement
- Collar and cuffs have dual-action stain repel/soil release
- Adjustable waist ties
- Moisture management for effortless all day comfort
- Roomy, easily accessible pockets reinforced at stress points

4.5 oz., 100% Polyester Microfiber Microcheck

9K03 Women's sizes: XS-3XL
Colors: (BU), (PT), (ST)

LS HW



D. NEW Microfiber Pull On Pant

Easy wear pants pair perfectly with all of our microcheck patterns.

- Wider, more comfortable elastic waist
- Differential rise for a better fit
- Roomy, sideseam pockets reinforced at stress points
- 32.5" finished inseam can be easily altered

4 oz., 100% Polyester Microfiber 2M11 Women's sizes: XS-3XL

Color: (BK)

HW



A. Tunic Chef Coat, White (KT80WH)



B. Vented-Back Comfort Chef Coat, White (KV10WH)



B. Vented-Back Comfort Chef Coat (Detail)



C. Women's Knot-Button Chef Coat, White (KT91WH)

D. Chef Hat, Red (HP60RD)

A. Tunic Chef Coat

Plenty of room in this chef coat, designed in comfortable pre-shrunk 7 oz. twill with a concealed gripper front.

- Cross collar
- Vented cuffs
- Thermometer pocket on left sleeve

7 oz., 65/35 Polyester/Cotton Twill

KT80 Unisex sizes: S-2X

Color: (WH)

IL LS HW

B. Vented-Back Chef Coat

Cool, calm and collected in a lightweight fabric with fully vented back featuring breathable mesh insert.

- Double breasted with ten pearl buttons
- Roll sleeves with snap tab
- Lightweight textured fabric

4 oz., 75/25 Polyester/Cotton

KV10 Unisex sizes: S-3XL

Color: (WH)

LS HW

C. Women's Knot-Button Chef Coat

Princess seams in front and back provide a flattering fit. Soft 6 oz. fine line twill is a pleasure to wear.

- Stand-up collar
- Reversible front with ten knot buttons
- Two front patch pockets
- Vented cuffs

6 oz., 80/20 Polyester/Cotton Fine Line Twill

KT91 Women's sizes: S-3X

Color: (WH)

LS HW

D. Chef Hat

- Adjustable hook & loop closure

One Size

HP60 80/20 Polyester/Cotton

Color: (BB), (BK), (CB), (RD), (WH)

HT60 65/35 Polyester/Cotton Twill

Color: (WB)

LS HW

Culinary

The perfect recipe. A touch of Chef Designs adds just the right flavor to complement the most complete line available anywhere.

A. Eight Pearl-Button Chef Coat

Easy wearing in pre-shrunk 7.5 oz. twill with soil release and wickable finish.

- Vented cuffs
- Left chest pocket

7.5 oz., 65/35 Polyester/Cotton

Color: (WH)

0403 Long sleeve,
no thermometer pocket

Unisex sizes: (Reg) XS-5X, (Long) L-3X

0413 Long Sleeve,
with thermometer pocket

Unisex sizes: XS-5X

0402 3/4 Sleeve,
no thermometer pocket

Unisex sizes: XS-4X

0404 1/2 Sleeve,
no thermometer pocket

Unisex sizes: S-4X

7.5 oz., 100% Spun Poly w/
Soil Release and Wickable Finish

0423 Long Sleeve,
with thermometer pocket

Unisex sizes: XS-3X

Color: (WH)

IL LS HW



A. Eight Pearl-Button Chef Coat, White (0403WH)

B. Eight Knot-Button Chef Coat

A double-breasted silhouette is punctuated with eight knot buttons.

- Stand-up collar
- Vented cuffs
- Twill version is pre-shrunk and treated with soil release

7.5 oz., 65/35 Polyester/Cotton Twill

0411 No thermometer pocket

Unisex sizes: S-4XL (Reg),

L-3XL (Long)

Color: (WH)

0414 Thermometer pocket

Unisex sizes: S-3X

Color: (WH)

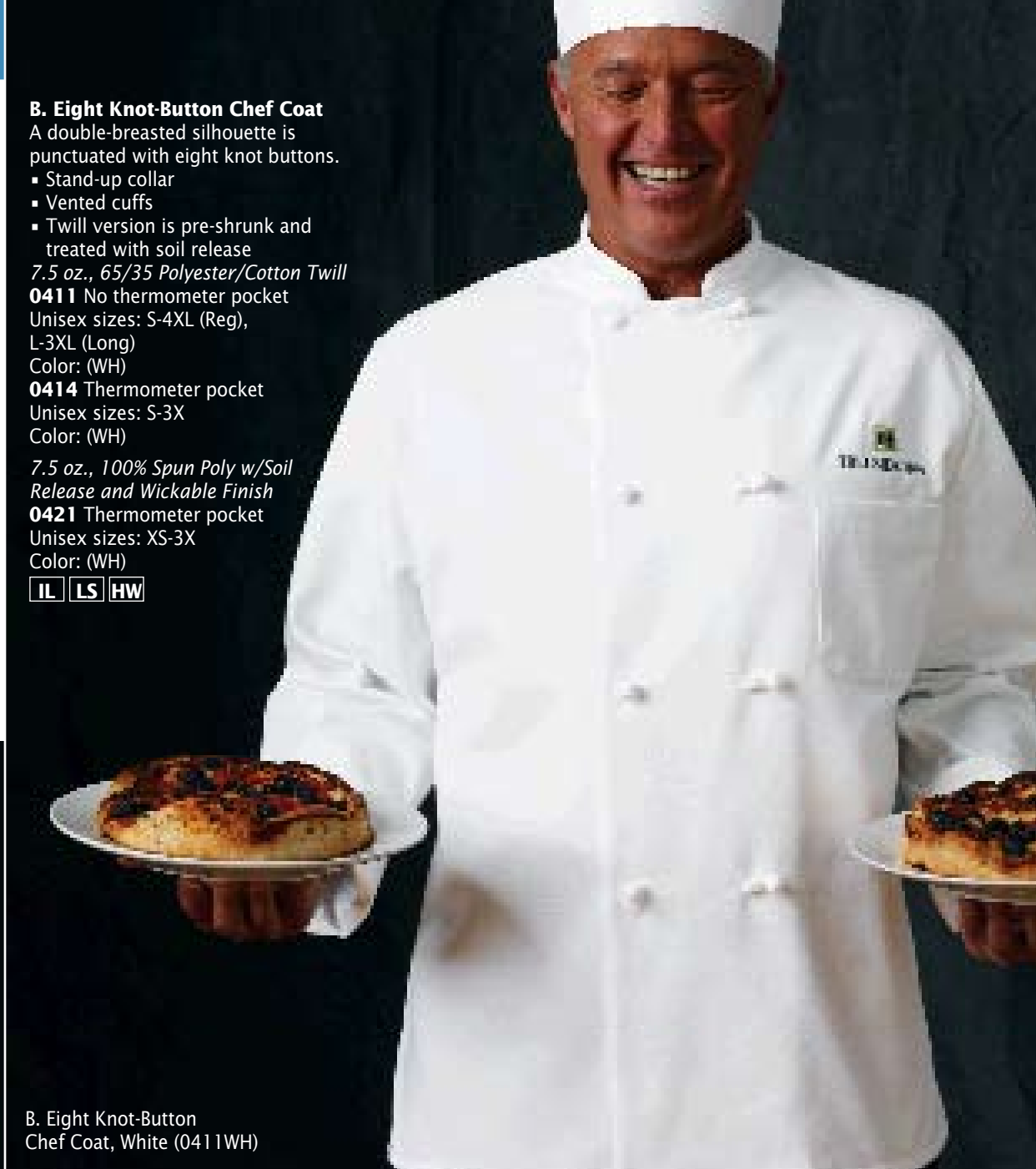
7.5 oz., 100% Spun Poly w/Soil Release and Wickable Finish

0421 Thermometer pocket

Unisex sizes: XS-3X

Color: (WH)

IL LS HW



B. Eight Knot-Button Chef Coat, White (0411WH)

C. Ten Pearl-Button Chef Coat

A stand-up collar and pearl buttons make an impressive appearance in the kitchen.

- Vented cuffs
- Left chest pocket
- Fine line twill version is pre-shrunk and treated with soil release

6 oz., 80/20 Polyester/Cotton Fine Line Twill

0400 No thermometer pocket

Unisex sizes: 36-56

7.5 oz., 65/35 Polyester/Cotton

0415 With thermometer pocket

Unisex sizes: XS-4X

Color: (WH)

IL LS HW



C. Ten Pearl-Button Chef Coat, White (0400WH), (0415WH)

D. Garnish Chef Coat, White w/ Black Trim, (KT74BT)



E. Black Chef Coat, Black (0425BK)



F. Military Bus Coat

A salute to hard work with a military collar and four pearl-button front.

- Pre-shrunk 7 oz. twill
- Left chest pocket and two lower pockets
- Hemmed sleeve

7 oz., 65/35 Polyester Twill

4020 Unisex sizes: XS-2X

Color: (WH)

IL LS HW



F. Military Bus Coat, White (4020WH)

D. Garnish Chef Coat

White 7.5 oz. soil-release fabric is garnished with black pearl buttons and trim.

- Pre-shrunk for long wear
- Vented cuffs
- Left chest pocket and thermometer pocket on left sleeve

7.5 oz., 65/35 Polyester/Cotton Twill

KT74 Unisex sizes: S-3X

Color: (BT)

IL LS HW

E. Black Chef Coat

Dashing black design is available in two fabrications.

- Pearl buttons
- Vented cuffs
- Left chest pocket and thermometer pocket on left sleeve

0425 6.5 oz., 100% Spun Polyester Twill (Ten buttons)

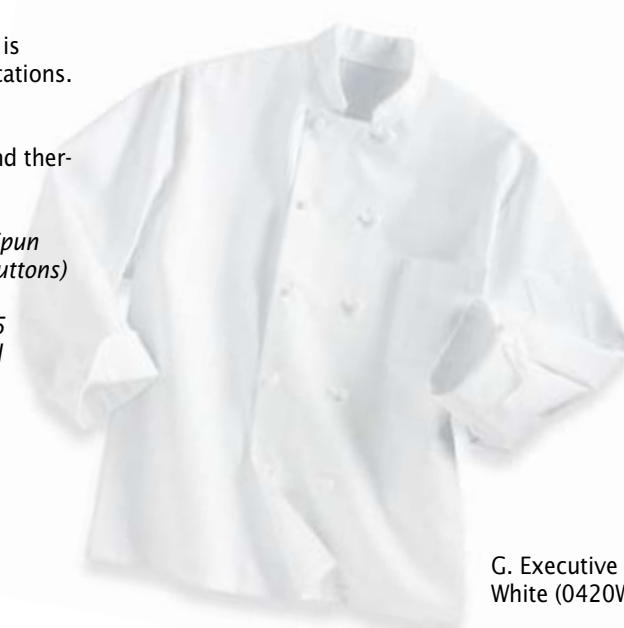
Unisex sizes: XS-3X

KT76 7.25 oz., 65/35 Polyester/Cotton Twill (Eight buttons)

Unisex sizes: S-3X

Color: (BK)

IL LS HW



G. Executive Chef Coat

Making the right decision calls for complete comfort in pre-shrunk 7.5 oz. soil-release twill.

- Double-breasted with Ten knot buttons
- Generous armhole openings
- Embroidered underarm ventilation
- Left breast pocket and thermometer pocket on left sleeve

7.5 oz., 65/35 Polyester/Cotton Twill

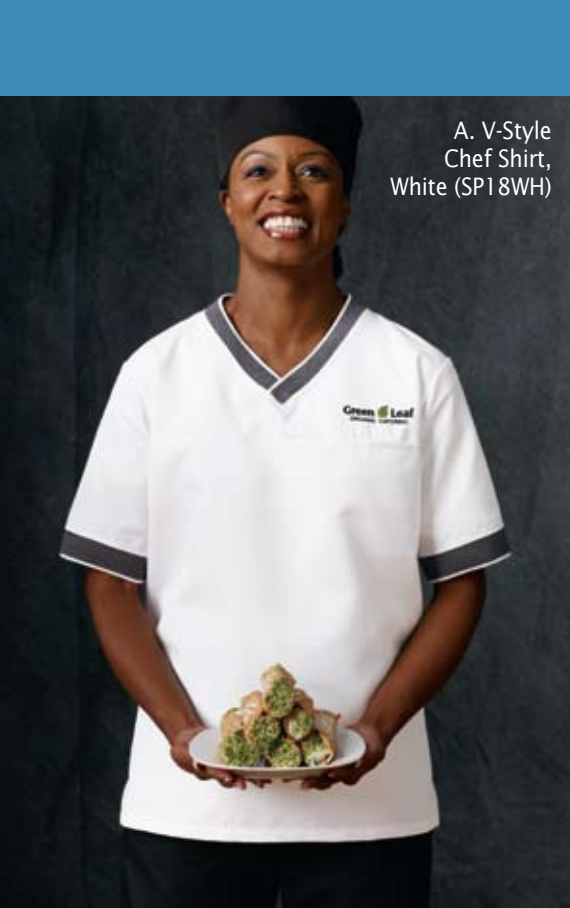
0420 Unisex sizes: (Reg) XS-3X,

(Long) M-XL

Color: (WH)

IL LS HW

G. Executive Chef Coat, White (0420WH)



A. V-Style
Chef Shirt,
White (SP18WH)



B. Check V-Neck
Chef Shirt, Black/
White
Check (SP08WB)



C. Snappy
V-Chef Shirt,
White (SP06WH)

A. V-Style Chef Shirt

A comfortable neckline and sleeves are trimmed with a birdseye ribbed pattern. Extra soft, lightweight fine line twill fabric.

- Pleated action back
- Side slit for easy movement
- Hidden left chest pocket

6 oz., 80/20 Polyester/Cotton

SP18 Unisex sizes: S-3X

Color: (WH)

IL LS HW

B. Checked V-Neck Chef Shirt

This soft, lightweight fabric in a comfortable design is a cool option in the kitchen.

- One left chest pocket

4.2 oz., 65/35 Polyester/Cotton Poplin

SP08 Unisex sizes: S-3X

Color: (WB)

LS HW

C. Snappy V-Chef Shirt

A comfortable option for the kitchen.

- Three gripper closure on contrast trim placket
- Side vents
- Thermometer pocket on left sleeve

4.7 oz., 65/35 Polyester/Cotton Poplin

SP06 Unisex sizes: S-3X

Color: (WH)

LS HW

D. Skull Cap

65/35 Polyester/Cotton

HP70 Unisex sizes: M (23"), L (25")

Colors: (BK), (WH)

HW

E. Cook Shirt

Squared bottom can be worn in or out for comfort. Great soil-release finish.

4.7 oz., 65/35 Polyester/Cotton

Unisex sizes: S-4X

5010 Button closure, left chest pocket

28" length in size Medium

Color: (WH)

5020 Gripper closure, left chest pocket

28" length in size Medium

Colors: (BK), (WH)

5028 4.3 oz., 80/20 Polyester/Cotton

Gripper closure, left chest pocket

28" length in size Medium

Unisex sizes: S-3X

Color: (WH)

5035 4 oz., 100% Spun Polyester

Gripper closure, no pocket

30.5" length in size Medium

Unisex sizes: S-4X

Colors: (BK), (WH)

5050 4.7 oz., 65/35 Polyester/Cotton

Gripper closure, no pocket

30.5" length in size Medium

Unisex sizes: (Reg) S-4X, (Long) L-3X

Color: (WH)

IL LS HW

F. Black-Trim Cook Shirt

Black stand-up collar adds contrast and a pinch of style.

- Five black-button front
- One left chest pocket
- Squared bottom

4.25 oz., 65/35 Polyester/Cotton

SP04 Unisex sizes: S-3X

Color: (WH)

IL LS HW



D. Skull Cap,
White (HP70WH)
E. Cook Shirt,
Black (5035BK)

F. Black-Trim
Cook Shirt,
White (SP04WH)

H. Baggy Chef Pant with Zipper Fly, Black/White Check (PT55BW)

H. Baggy Chef Pant with Zipper Fly Glen Plaid (PT65GN)

J. Cook Pant with Zipper Fly, Black/White Check (2030BW)

G. Baggy Chef Pant, Black (PS54BK)

K. Button Front Vest, Black (1360BK)

G. Baggy Chef Pant

Lots of room for chefs on the move.

- Full elastic waist with drawstring
- Two sideseam pockets
- One back patch pocket

100% Spun Polyester

Unisex sizes: S-3XL

PS54 6.5 oz. Piece-Dyed Twill

Color: (BK)

PS54 7 oz. "Duraprint"— a laundry favorite, this new print technology allows garment to be washed over and over without fading.

Colors: (CK), (CS)

PS54 5 oz. Yarn-Dyed Check

Color: (WB)

IL LS HW

H. Baggy Chef Pant with Zipper Fly

Tailored for lots of room in a substantial 7.5 oz. twill with soil release finish.

- Zipper fly
- Full elastic waist with drawstring
- Two on-seam pockets
- One back patch pocket

PT55 7.5 oz., 65/35 Polyester/Cotton Twill

Colors: (BK), (BW)

PT65 6 oz., 65/35 Polyester/Cotton Yarn Dyed Twill

Colors: (BK), (BU), (GN)

IL LS HW

J. Cook Pant with Zipper Fly

A comfortable fit with a side elastic waist and soil release.

- Brass zipper and snap closure
- Two front pockets, two patch hip pockets
- Unfinished hems

65/35 Polyester/Cotton

2030 4.7 oz. Yarn-Dyed Poplin

Sizes: 30-50

Color: (BW)

2020 7 oz. Twill

Sizes: 30-46

Colors: (WH), (BK)

Sizes: 28-54

Color: (BW)

IL LS HW

K. Button Front Vest

Tailored style served up in a machine washable

7.5 oz. twill.

- Chest pocket
- Two lower pockets

7.5 oz., 65/35 Polyester/Cotton

1360 Unisex sizes: S-3X

Colors: (BK), (KH), (NV), (RD), (RB)

IL LS HW

Black (BK)

Navy (NV)

Khaki (KH)

Red (RD)

Royal Blue (RB)



A. Scrub Pant,
Black (3030BK)

B. Baggy Cook Pant,
Black (5360BK)

C. Checked Cook Pant, Black/White
Check (PS64WB)

A. Scrub Pant

Exceptional roominess for ease of movement in and out of the kitchen.

- Drawstring waist
- Two on-seam pockets
- One back patch pocket
- Lightweight fabric

4.25 oz., 65/35 Soil Release,
Wickable Polyester/Cotton Poplin

3030 Unisex sizes: S-3XL

Color: (BK)

IL LS HW

B. Baggy Cook Pant

A roomy relaxed fit in an easy-care blend.

- Full elastic waist with drawstring
- Two sideseam pockets
- One back patch pocket

7.5 oz., 65/35 Polyester Cotton Twill

5360 Unisex sizes: XS-3X

Colors: (BK), (BW)

IL LS HW

C. Checked Cook Pant

The familiar checked cook pant translated in a breezy 5 oz. yarn dyed plain weave.

- Relaxed fit
- Side elastic in waistband
- Two front pockets, two patch hip pockets
- Brass zipper and snap closure

5 oz., 100% Polyester

PS64 Sizes: 28-48

Color: (WB)

IL LS HW



A. Tuxedo Apron, Black (TT38BK)



B. Standard Bib Apron, Red (2500RD)



C. Short Premium Bib Apron, Black (TT32BK)

A. Tuxedo Apron

- The apron goes formal in black twill.
- Adjustable strap closure
- Center divided patch pocket
- One size fits all
- Soil release finish
- 28" x 32"

TT38 7.5 oz., 65/35 Polyester/Cotton
Color: (BK)

IL LS HW

B. Standard Bib Apron

Protect clothing and look professional too.

- Strong tubular braid ties
- Soil release
- One size fits all
- 30" x 33"

7.5 oz., 65/35 Polyester/Cotton

1751 With Pencil Pocket

Colors: (BK), (RD), (RB), (WH)

1430 Without Pencil Pocket

Colors: (BK), (DR), (HG), (NV), (RD), (RB), (WH)

100% Spun Polyester

2500 Without pencil pockets

- 27" x 31"

Colors: (BK), (FG), (RD), (WH)

IL LS HW

C. Short Premium Bib Apron

Basic coverage in four colors.

- Three-section pocket
- Adjustable neck strap with plastic buckle
- One size fits all

7.5 oz., 65/35 Polyester/Cotton

TT32 28" x 24"

Colors: (BK), (BR), (HG), (NV)

IL LS HW

D. Premium Bib Apron

Full-length with a choice of fabrics and pockets.

- Adjustable neck strap with plastic buckle
- Two section pocket
- Soil release
- One size fits all

7.5 oz., 65/35 Polyester/Cotton

TT30 24" x 34" with divided pocket

Colors: (BK), (FG), (HG), (NV), (RB), (WH)

IL LS HW

6 oz., 100% Cotton Twill

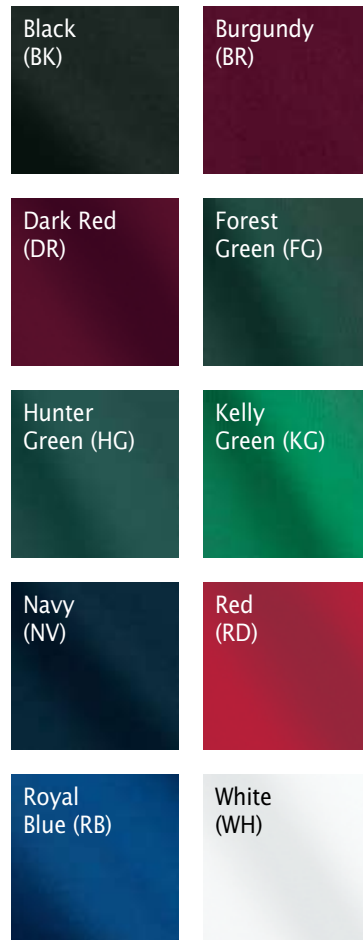
TC30 23" x 34" with separate side patch pockets

Color: (WH)

HW



D. Premium Bib Apron, Black (TT30BK), Hunter Green (HG), Navy (NV), White (WH), Royal Blue (RB)



E. Cobbler Apron

Side tie design for easy on and off.

- Adjustable side ties
- Split-pouch pocket
- Available in medium and large sizes

TP61 5 oz., 80/20 Polyester/
Cotton Poplin

Colors: (BK), (KG), (LB), (NV), (RD), (RB),
(TN), (WH)

IL LS HW

F. Waist Apron

Just the right size to do the job well.

- Three-division front pocket
- Self ties
- 23" x 11" with squared corners
- Soil release

TT46 7.5 oz., 65/35 Polyester/
Cotton Twill

Colors: (BK), (BR), (HG), (NV), (WH)

IL LS HW

G. Half Apron

Stay organized all day long.

- Three-division pouch pocket
- Self-ties
- 20" x 14" with rounded corners
- Soil release

TT36 7.5 oz.,
65/35 Polyester/Cotton Twill
Color: (BK)

IL LS HW

H. Bar Apron

Basic no-pocket styling in
two fabrics.

- Strong, tubular braid ties
- 28" x 32"
- One size fits all
- Soil release

2134 7.5 oz., 65/35 Polyester/
Cotton Twill

2510 7.2 oz.,
100% Spun Polyester
Color: (WH)

IL LS HW



H. Bar Apron,
White (2134WH)

J. 4-Way Bar
Apron, White
(1790WH)

J. 4-Way Bar Apron

Wear it four different ways.

- Tubular braid ties
- 29" x 32"
- One size fits all
- Soil release

1790 7.5 oz., 65/35 Polyester/
Cotton Twill

Color: (WH)

IL LS HW

K. Bistro Apron

Gracious hospitality served up in a
choice of easy to care for fabrics.

- Extra long ties across top of apron
- Large rectangular pocket
with pencil divider
- Wrinkle resistant
- 28" x 32"

TT34 7.5 oz., Soil Release 65/35
Polyester/Cotton

Colors: (BK), (BR), (NV), (WH)

TC34 6 oz., 100% Cotton Twill
Color: (WH)

HW

K. Bistro Apron,
White (TT34WH)



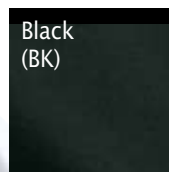
E. Cobbler Apron,
Black (TP61BK)



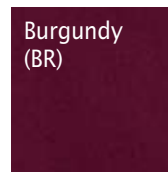
F. Waist Apron,
Navy (TT46NV), White (WH),
Hunter (HG), Burgundy (BR),
Black (BK)



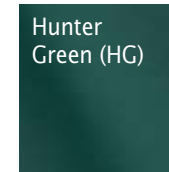
G. Half Apron,
Black (TT36BK)



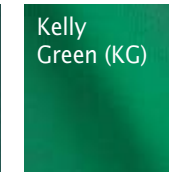
Black
(BK)



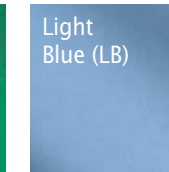
Burgundy
(BR)



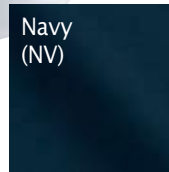
Hunter
Green (HG)



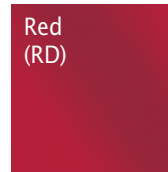
Kelly
Green (KG)



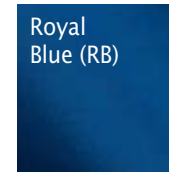
Light
Blue (LB)



Navy
(NV)



Red
(RD)



Royal
Blue (RB)



Tan
(TN)



White
(WH)