

Pants

Outstanding construction. All Red Kap® pants are crafted for WORK with the strongest designs and features. From cargo shorts to dress pants, you know with Red Kap® you have a pair built to last with all-day comfort.

A. Cell Phone Pocket Pant

Keeps your cell phone within reach while you stay comfortable.

- Cell phone pocket with concealed closure is placed on the sideseam for better access and comfort
- Touchtex® technology

8 oz., 65/35 Cotton/Twill

PT2C Men's sizes: 28-50, vary by color

Colors: (BK), (CH), (KH), (NV)

IL **LS** **HW**

Black (BK)

Charcoal (CH)

Khaki (KH)

Navy (NV)

A. Cell Phone
Pocket Pant,
Khaki (PT2CKH)

A. Elastic Insert Pant

Bend, stretch and twist in complete comfort.

- Side elastic inserts

8 oz., 65/35 Polyester/Cotton Twill

PT60 Men's button closure

Sizes: 27/28-57/58, vary by color
Colors: (BK), (BN), (CH), (KH), (NV), (SG), (TN), (WH)

PT61 Women's hook/eye closure

Sizes: 4-28, vary by color
Colors: (BK), (CH), (KH), (NV), (WH)

IL LS HW

Half Elastic Work Pant

(not shown)

- Touchtex® technology
- Elastic back
- Hook/eye closure
- No hip pockets

7.5 oz., 65/35 Polyester/Cotton Twill

PT59 Women's sizes: 4-32, vary by color

Colors: (BN), (CH), (NV), (SG), (TN), (WH)

IL LS HW

B. DuraKap® Industrial Pant

Tailored in soft, durable fabric with soil release and excellent color retention.

- Front and back pockets
- Jean-style waistband with button closure for a comfortable fit
- Touchtex® technology

8 oz., 65/35 Polyester/Cotton Twill

PT20 Men's sizes: 28-60, vary by color

Colors: (BK), (BN), (CH), (KH), (NV), (SG), (WH)

PT21 Women's sizes: 2-24

Colors: (BK), (CH), (KH), (NV)

IL LS HW

Red E Prest Work Pant

(not shown)

Touchtex® technology fabric delivers permanent softness and stain-release.

Easy fit for comfort.

- Easy fit with front and back pockets
- Upgraded waistband with button closure
- PT11 with fitted waist and front darts
- Touchtex® technology

8 oz., 65/35 Polyester/Cotton Twill

PT10 Men's sizes: 26-62, vary by color

Colors: (BK), (BN), (CH), (GY), (NV), (PB), (RB), (SG), (TN), (WH)

PT11 Women's sizes 2-24, vary by color

Colors: (BK), (KH), (NV)

IL LS HW

A. Elastic Insert Pant, Navy (PT61NV)

B. DuraKap® Industrial Pant, Charcoal (PT20CH)



Tan (TN)

White (WH)

Spruce Green (SG)

Khaki (KH)

Charcoal (CH)

Brown (BN)

Navy (NV)

Black (BK)



C. Pleated Work
Pant, Black (PT32BK)

C. Pleated Work Pant

Look good and work hard in this classic silhouette with double front pleats. Touchtex® technology fabric with soil release has great color retention.

- Front and back pockets
- Jean-style waistband with button closure

8 oz., 65/35 Polyester/Cotton Twill

PT32 Men's sizes: 28-54, vary by color

Colors: (BK), (CH), (KH), (NV)

IL **LS** **HW**

D. Industrial
Cargo Pant
(PT18)



D. Industrial Cargo Pant

Updated utility style cargo pants offer a relaxed fit. Touchtex® technology with soil release.

- Two cargo pockets

8 oz., 65/35 Polyester/Cotton Twill

PT18 Men's sizes: 28-44, vary by color

Colors: (BK), (CH), (KH), (NV)

IL **LS** **HW**

A. Jean Cut Work Pant

- Touchtex® technology
- Frontier-style front pockets
- Patch hip pockets
- Button closure waistband

8 oz., 65/35 Polyester/Cotton Twill

PT50 Men's sizes: 28-50, vary by color

Colors: (CB), (CH), (NV), (SG)

IL **LS** **HW**

Specialized Pant (not shown)

- Touchtex® technology
- Front pockets and hip pocket
- Hook/eye closure
- No buttons

8 oz., 65/35 Polyester/Cotton Twill

PT56 Men's sizes: 30-42

Color: (WH)

7.25 oz., Horizon Soft Hand Polyester

PS56 Men's sizes: 30-44

Color: (WH)

FORTREL®

The Fiber of Choice
(Style PS56 only)

IL **LS** **HW**

A. Jean Cut Work Pant,
Navy (PT50NV)
Chocolate Brown (PT50CB)
Spruce Green (PT50SG)
Charcoal (PT50CH)

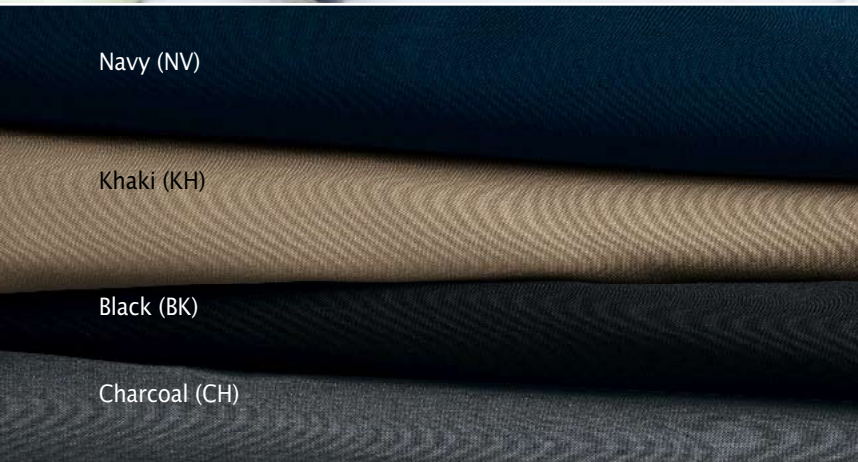
**Red Kap® Work Pants—
Working Overtime.
Built for the longest day.
Built for comfort.
Built to last.**



B. Relaxed Fit Casual Slacks, Black (PT44BK)



C. Brushed Twill Casual Slacks, Navy (PT39NV)



Navy (NV)

Khaki (KH)

Black (BK)

Charcoal (CH)

B. Relaxed Fit Casual Slacks

Touchtex® technology works hard with soil release and great color retention.

- Relaxed fit with pleated front
- Front and back pockets
- Upgraded waistband with button closure

8 oz., 65/35 Polyester/Cotton Twill

PT44 Men's sizes: 28-50

PT43 Women's sizes: 4-22

Colors: (BK), (KH), (NV)

IL **LS** **HW**

C. Brushed Twill Slacks

A tailored classic with a softer feel.

- Relaxed fit, straight leg styling
- Front and back pockets
- Hook/eye closure
- Pleated front

7.5 oz., 65/35 Polyester/Cotton

PT38 Men's sizes: 28-52, vary by color

PT39 Women's sizes: 4-22

Colors: (BK), (CH), (KH), (NV)

LS

WORK NMotion®

Technologically advanced memory stretch fabric

Squat, push, lift, twist, pull, reach, climb and stretch your way to success. Work NMotion® fabric moves right along with you. Its proprietary polyester yarns do more than just expand. Innovative technology allows the yarn to shrink back to its normal state, which means no more sagging knees and elbows. Cotton gives it all-day softness. And that's not all. It delivers durability, soil release, color retention and a mean crease. Hire it today.

A. Work NMotion®
Men's Pant, Khaki
(PZ20KH)

B. Work NMotion®
Women's Pant,
Khaki (PZ43KH)

Black (BK)

Khaki (KH)

Charcoal (CH)

Navy (NV)

A. Work NMotion® Men's Pant

Fabric created exclusively for Red Kap®. Technologically crafted polyester for permanent comfort wear.

- Button and zipper closure
- Memory stretch yarns for flexibility
- Front and back pockets

7.75 oz., 75/25 Polyester/Cotton Stretch Twill

PZ20 Plain Front Jean-style waistband, sizes: 28-52

PZ60 Plain Front w/Side Elastic, sizes: 30-46

Colors: (BK), (CH), (KH), (NV)

WORK NMOTION

IL LS HW

B. Work NMotion® Women's Pant

Fabric created exclusively for Red Kap®. Technologically crafted polyester for permanent comfort wear.

- Updated fit and contemporary styling
- Button and zipper closure
- Single button on a comfortable natural waistline
- Straight leg
- Stretch yarns for flexibility
- One right hip pocket with button closure
- Waistband cut on bias to fit the body

7.75 oz., 75/25 Polyester/Cotton

PZ43 Pleated Front, sizes: 2-24

PZ33 Women's Plain Front w/top entry front pockets, sizes: 2-24

Colors: (BK), (CH), (KH), (NV)

WORK NMOTION

IL LS HW

C. Cotton Work
Pant, Charcoal
(PC20CH)

D. Cotton Cargo
Pant, Khaki
(PC56KH)



C. Cotton Work Pant

- Jean-style waistband with button closure

- Front and back pockets
- 8.5 oz., 100% Pre-shrunk Cotton Twill
(pressing recommended)

PC10 Men's sizes: 28-56, vary by color

Colors: (BN), (CH), (GG), (KH), (NV), (SG), (WH)

8.5 oz., 100% Wrinkle-Resistant Cotton Twill

PC20 Men's sizes: 28-56, vary by color

Colors: (BN), (CH), (DN), (GG), (KH), (NV), (PB), (SG), (OR)

IL LS HW

D. Cotton Cargo Pant

There's room for everything in six pockets. 100% cotton is wonderfully wrinkle-resistant.

- Two pleated cargo pockets with flaps
- Back patch pockets with button-down flaps

8 oz., 100% Wrinkle-Resistant Cotton Twill

PC56 Men's Relaxed fit, sizes: 30-50,

vary by color

NEW PC57 Women's Relaxed fit, sizes: 4-24

Colors: (KH), (NV)

IL LS HW

Cotton Elastic Insert Pant (not shown)

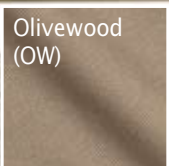
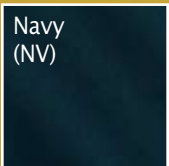
- Plain front
- Front and back pockets
- Button and zipper closure
- Side elastic waistband inserts
- Traditional fit

8.5 oz., 100% Wrinkle-Resistant Cotton Twill

PC64 Men's sizes: 27/28-49/50

Colors: (BK), (CH), (KH), (DN)

IL LS HW



A. Plain Front Casual Cotton Pant, Olivewood (PC44OW)

B. Pleated Front Casual Cotton Pant, Olivewood (PC46OW)

A. Plain Front Casual Cotton Pant

A pant that moves with you all day with a clean plain front for a slimming effect.

- Plain front
- Button and zipper closure
- Front and back pockets
- Premium soft hand cotton
- Updated fit

7.5 oz., 100% Cotton with Mechanical Stretch

PC44 Men's sizes: 28-50

PC45 Women's sizes: 4-24

Colors: (BK), (KH), (NV), (OW), (ST)



B. Pleated Front Casual Cotton Pant

A pleated front gives this comfortable pant a dressier look.

- Pleated front
- Button and zipper closure
- Front and back pockets
- Premium soft hand cotton
- Updated fit

7.5 oz., 100% Cotton with Mechanical Stretch

PC46 Men's sizes: 28-50

PC47 Women's sizes: 4-24

Colors: (BK), (KH), (NV), (OW), (ST)



C. Plain Front Polyester Dress Pant

Basics to rely on day after day.

- Updated fit, straight-leg styling
- Hook/eye closure
- Men's has front quarter top pockets and hip pockets with left button closure
- Women's has front quarter top pockets and single hip pocket with a natural waistline

6 oz., 100% Texturized Polyester

PS36 Men's sizes: 30-50, vary by color

PS37 Women's sizes: 4-18

Colors: (BK), (GY), (NV)





C. Plain Front Polyester Dress Pant, Black (PS37BK), Black (PS36BK)

D. Plain Front Dress Pant

Traditional fit in four versatile and functional colors.

- Double hook/eye closure on Men's
- Single hook/eye closure on Women's
- Brass zipper
- Executive waistband
- Men's front and back pockets
- Flattering feminine front pockets for a slim fit

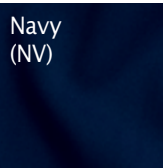
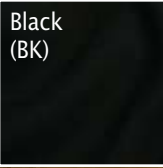
6.5 oz., 70/30 Polyester/Wool

PW19 Women's sizes: 2-24

PW18 Men's sizes: 30-48

Colors: (BK), (DG), (KH), (NV)

HW DC



D. Plain Front Dress Pant, Dark Gray (PW19DG)

E. Pleated Front Dress Pant, Dark Gray (PW16DG)

Navy (NV)

Khaki (KH)

Black (BK)

Dark Gray (DG)

E. Pleated Front Dress Pant

A double pleated front adds style to this basic pant.

- Hook/eye closure
- Brass zipper
- Executive waistband
- Men's front and back pockets
- Women's styled with front pockets

6.5 oz., 70/30 Polyester/Wool

PW17 Women's sizes: 2-24

PW16 Men's sizes: 30-48

Colors: (BK), (DG), (KH), (NV)

HW DC



Stone (ST)

Tan (TN)

Khaki (KH)

Olivewood (OW)

Brown (BN)

Spruce Green (SG)

Navy (NV)

Charcoal (CH)

Black (BK)

Dark Navy (DN)

A. Cotton Casual Plain Front Short, Black (PC27BK)

B. Plain Front Short, Tan (PT26TN)



A. Cotton Casual Plain Front Short

- Front and back pockets
- Jean-style waistband
- Premium soft hand cotton
- Men's traditional fit
- Women's updated fit

7.5 oz., 100% Cotton with Mechanical Stretch

PC26 Men's Jean-style waistband, sizes: 28-50 (10" inseam), vary by color
Colors: (BK), (KH), (NV), (OW), (ST)

8.5 oz., 100% Wrinkle Resistant Cotton Twill

PC27 Women's Jean-style waistband, sizes: 4-22 (8" inseam)
Colors: (BK), (KH), (NV), (OW), (ST)

HW

8.5 oz., 100% Wrinkle Resistant Cotton Twill

PC42 Men's w/Side Elastic, sizes: 28-50 (10" inseam)
Colors: (BK), (CH), (KH), (DN)

IL LS HW

B. Plain Front Short

Traditional fit in six great colors.

- Front and back pockets
- Jean-style waistband
- Mid-thigh inseams
- PT42 with side elastic waistband inserts
- PT27 plain front and updated fit

7.25 oz., 65/35 Polyester/Cotton

PT26 Men's sizes: 28-50 (9" inseam)
Colors: (BK), (BN), (CH), (NV), (SG), (TN)

PT27 Women's sizes: 4-22 (8" inseam)
Colors: (BK), (CH), (NV), (TN)

PT42 Men's w/Side Elastic, sizes: 29/30-45/46
Colors: (CH), (KH), (NV)

IL LS HW



C. Cargo Short, Khaki (PC66KH)



D. Cell Phone Pocket Short, Black (PT4CBK)



E. Pleated Front Short, Khaki (PT35KH, PT34KH)

Black (BK)

Charcoal (CH)

Khaki (KH)

Spruce Green (SG)

Brown (BN)

Navy (NV)

C. Cargo Short

Relaxed fit in wrinkle-resistant cotton.

- Two pleated cargo pockets with flaps
- Back patch pockets with button-down flaps
- Relaxed fit

8 oz., 100% Wrinkle-Resistant Cotton Twill

PC66 Men's sizes: 30-50 (10" inseam)

Colors: (KH), (NV)

IL LS HW

D. Cell Phone Pocket Short

Hidden snap keeps your cell phone safe and handy. Sideseam pocket keeps your phone safe by preventing you from sitting on your phone.

- Durable press for a crisp look
- Button at waist and hip pocket

PT4C Men's sizes 28-50, (10" inseam)

7.75 oz., 65/35 Polyester/Cotton

Colors: (BK), (KH)

7.25 oz., 65/35 Polyester/Cotton

Colors: (CH), (NV)

IL LS HW

E. Pleated Front Short

A double-pleated front adds style to a warm-weather basic.

- Jean-style waistband
- Front and back pockets

7.5 oz., 65/35 Polyester/Cotton

PT34 Men's sizes: 30-50, (inseam 10"), vary by color

Colors: (BK), (CH), (KH), (NV), (SG)

PT35 Women's sizes: 4-22, (inseam 8"), vary by color

Colors: (BK), (CH), (KH), (NV)

IL LS HW

A. Value Jean, Pre-Washed
Denim Blue (PD40PW)

good

A. NEW Value Jean

Handles a wide range of occupations where a basic no-frills work jean is needed.

- Traditional Five-pocket jean, retail inspired
- No rivets and prewashed fabric for added comfort
- Retail fit for in-demand comfort on the job
- Traditional basics at an unbeatable price

13.75 oz., 100% Cotton Denim

PD40 Men's sizes: 28-54

Color: (PW)

HW

B. Authentic RK Denim
Jean, Pre-Wash Black
(PD60BW) and
Pre-Wash Indigo
(PD61PW)

better

B. Authentic RK Denim Jean

Traditional Five-pocket styling with a relaxed fit. Soft 13.75 oz. Durashield® denim provides great color retention without shrinkage.

- Deep front pockets
- Decorative stitching on back pocket
- Rivets at stress points
- Authentic RK branded leatherette patch

13.75 oz., 100% Pre-Washed Cotton Denim

PD61 Women's sizes: 4-22

PD60 Men's sizes: 28-54, vary by color

Colors: (BW), (PW)

Unfinished Inseam Available

IL LS HW

C. Wrangler Hero®
5-Star Relaxed Fit
Jean, (W976DS)



best

All You'll Ever Need

When it comes to jeans, we've got you covered. From the most basic pair that is priced to please to the most premium pair you know and trust, it's all right here. Your choices even include an IL-friendly version.

D. Utility Denim Work Jean,
Rigid Indigo (PD52DN),
Pre-Wash Black (PD54BW),
Pre-Wash Indigo (PD54PW)



E. Duck Dungarees,
Brown (PD30BD) and
Navy (PD30ND)



C. Wrangler Hero® 5-Star Relaxed Fit Jean

- Relaxed fit
 - Classic Five-pocket jean styling
 - Metal button closure at waist
- 13.75 oz., 100% Cotton Pre-Washed Denim*

W976 Men's sizes: 30-46
(30"-34" inseam)
Color: (DS)

HW

D. Utility Denim Work Jean

- Tough 13.75 oz. cotton denim twill for on-the-job strength and wearability.
- Basic Five-pocket, straight leg style
 - Metal button waistband closure
 - Felled outseam, seat seam and riser seam for increased durability
- 13.75 oz., 100% Cotton Denim Twill*

PD52 Men's sizes: 29-50
Color: (DN)

PD54 Men's sizes: 30-48
Color: (BW)

Men's sizes: 28-54
Color: (PW)

HW

E. Duck Dungaree

Extra strength and color retention team up in the polyester/cotton duck version. The 100% cotton duck version offers a strong yet slightly softer alternative.

- Two deep front pockets, large patch hip pockets
- Rule pocket on right, hammer loop on left
- Extra utility loop

PD30 9 oz., 65/35 Polyester/Cotton Duck
Men's sizes: 28-50

IL **LS** **HW**

PC30 12 oz., 100% Cotton Duck
Men's sizes: 30-44
Colors: (BD), (ND)

HW

A. Utility Cotton Dungarees,
Natural (PC24NT), Denim (PD24DN)



B. Utility Bib Overalls,
Denim (BD10DN)



C. Utility Work Pant,
Silver (PT62SV)

Silver (SV)

Khaki (KH)

Olive Green (OG)

Navy (NV)

Charcoal (CH)

Black (BK)

A. Utility Cotton Dungaree

All cotton, detailed for hard work.

- Oversized pockets
- Hammer loop
- Ruler and tool pocket
- Metal button closure at waist

PD24 11.75 oz., 100% Pre-Shrunk Cotton
Men's sizes: 29-52, Color: (DN)

PC24 10 oz., 100% Cotton Natural Canvas
Men's sizes: 30-44, Color: (NT)

HW

B. Utility Bib Overalls

Multi-tasking workwear with brass-plated, rust-resistant hardware.

- Adjustable shoulder straps
- Front pockets, hammer loop
- Ruler pocket, back patch pockets

BD10 11.75 oz., 100% Pre-Shrunk Cotton
Men's sizes: 30-56, Color: (DN)

HW

C. NEW Utility Work Pant

Builders, carpenters, tradesmen and more!
When a durable work pant with the softness of home wash is desired, look no further.

- Jean-style waistband
- Matches ST52/62 twill work shirt
- Soil release ensures a clean look after each wash

8 oz., 65/35 Polyester/Cotton Twill

PT62 Men's hook/eye closure w/extra wide belt loops

Sizes: 30-56

Colors: (BK), (CH), (KH), (NV), (OG), (SV)

HW